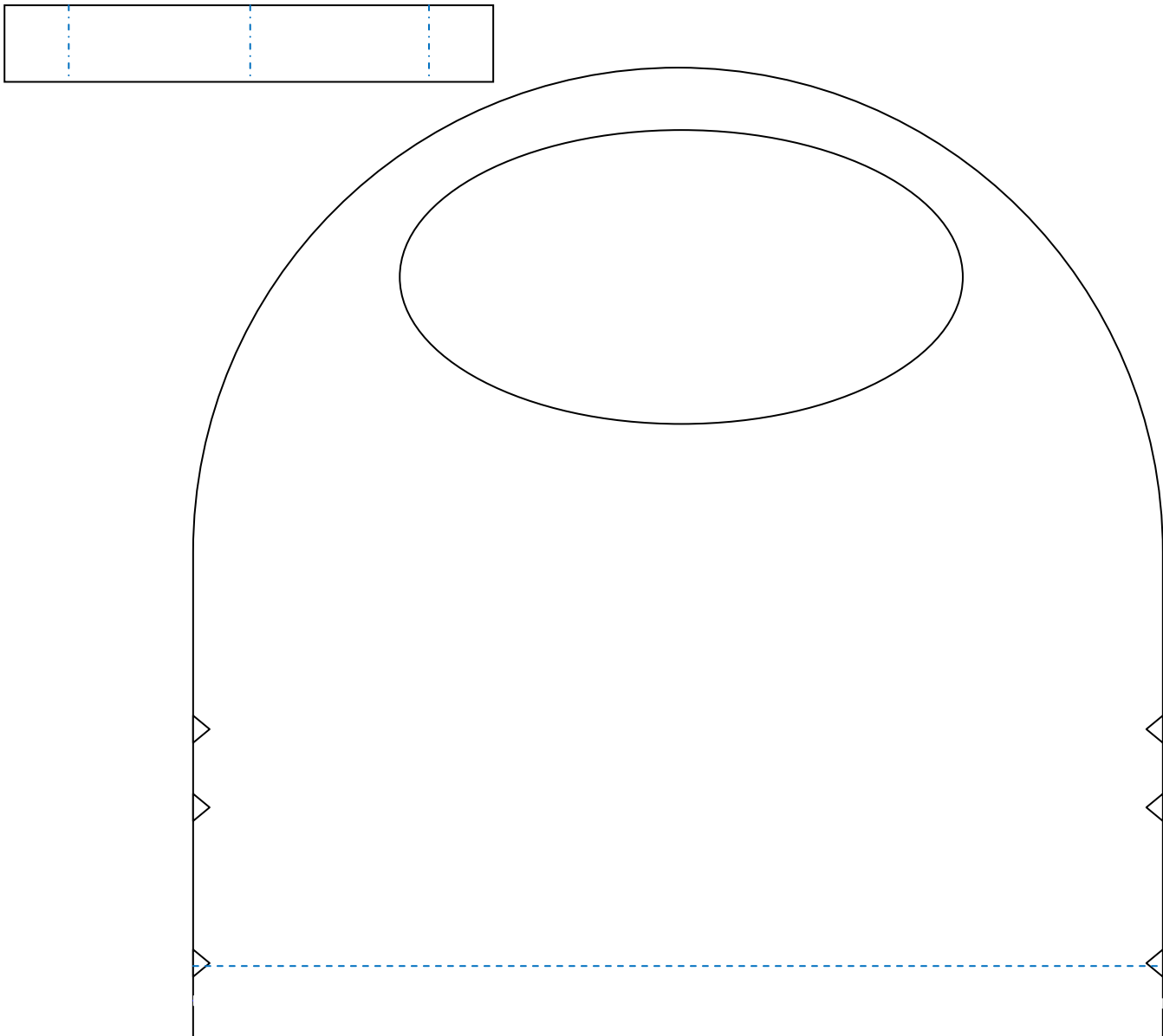


## 14.8 cm Square Handbag Template



### Instructions

Prepare a 14.8 square card by measuring a 6.2 cm strip along the length of an A4 card, then cutting it away. With the decorative side face down & the card in portrait position, measure & mark the central point on both long sides at 14.8 cm & score in this line. Fold & crease well.

Cut out the template above, rotate it so that the base aligns with the card fold & mark out onto your card. Flip the card over & reposition the template in the same way & mark the reverse in the same way.

Remove the template & score the blue dotted line on both back & front of the card marked by the notches.

Open up the card & re-fold the central crease so that the scored lines are on the inside of the card. Fold both scored lines back to form a 'gusset' along the fold of the card.

Cut around the outline of the card. Cut out the hand holes on the front & back of the card.

Cut out two of the rectangular strips & score on the blue dotted lines. Fold in on the central line & out on the two outer lines & secure within the handbag where indicated by the pairs of notches.

Decorate as normal, then tie a ribbon through the handles & finish with a bow.