

Making a box for a C6 card

What you will need to create this project:

2 x A5 card blanks*

(OR: 1 x A4 cut in half to measure 14.8 x 10.5 cm)

PVA glue

Paper clips

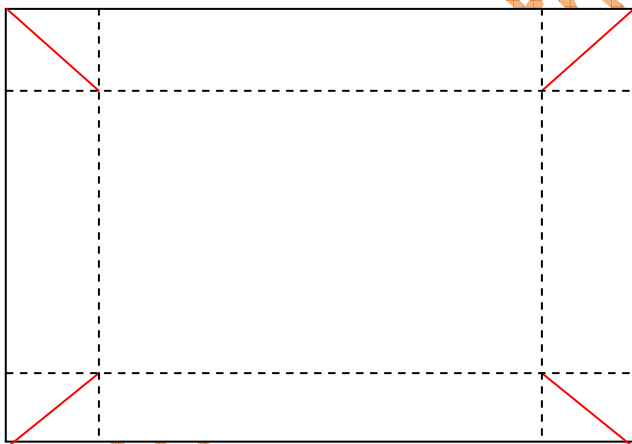
Pencil, ruler & scissors

How to assemble this project:

With one sheet of A5 card in horizontal position measure and mark a 2.2 cm border down one edge only. Draw in the line using your pencil & trim off. Repeat with the second card.

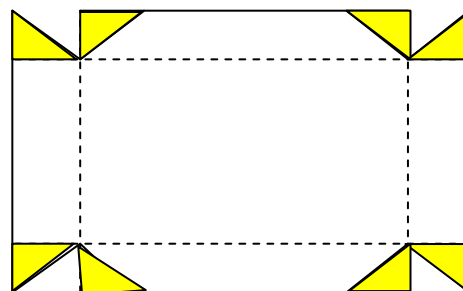
Working on one piece of the card, measure and mark a 2 cm border all around, but do not pencil in the line, instead score it using the side of the closed pair of scissors against the ruler. Repeat with the other card but measure and mark a 1.75 cm border rather than 2 cm.

From the corner of the card to where the two scored lines meet, draw a diagonal line, repeat on all corners on both cards, snip down this line with the scissors but only as far as the scored lines. See diagram below:



----- Score Lines
————— Cut lines

On one piece of card, fold in and then open up again all of the score lines - include the cut tabs at the corners. On the shorter ends reopen only the tabs leaving those on the longer edges folded in. Apply PVA glue onto the sides of the tabs that are facing upward. See highlighted areas on diagram below:



Bring up one long side and one short side, wrap one tab inside the box and the other on the outside & attach a paper clip to each tab until the glue is dry. Repeat on all corners of both sheets of card. Put aside to dry.

*Thin copier card or heavy weight card are not suitable for this project, the first will bend and the second will be difficult to score & fold