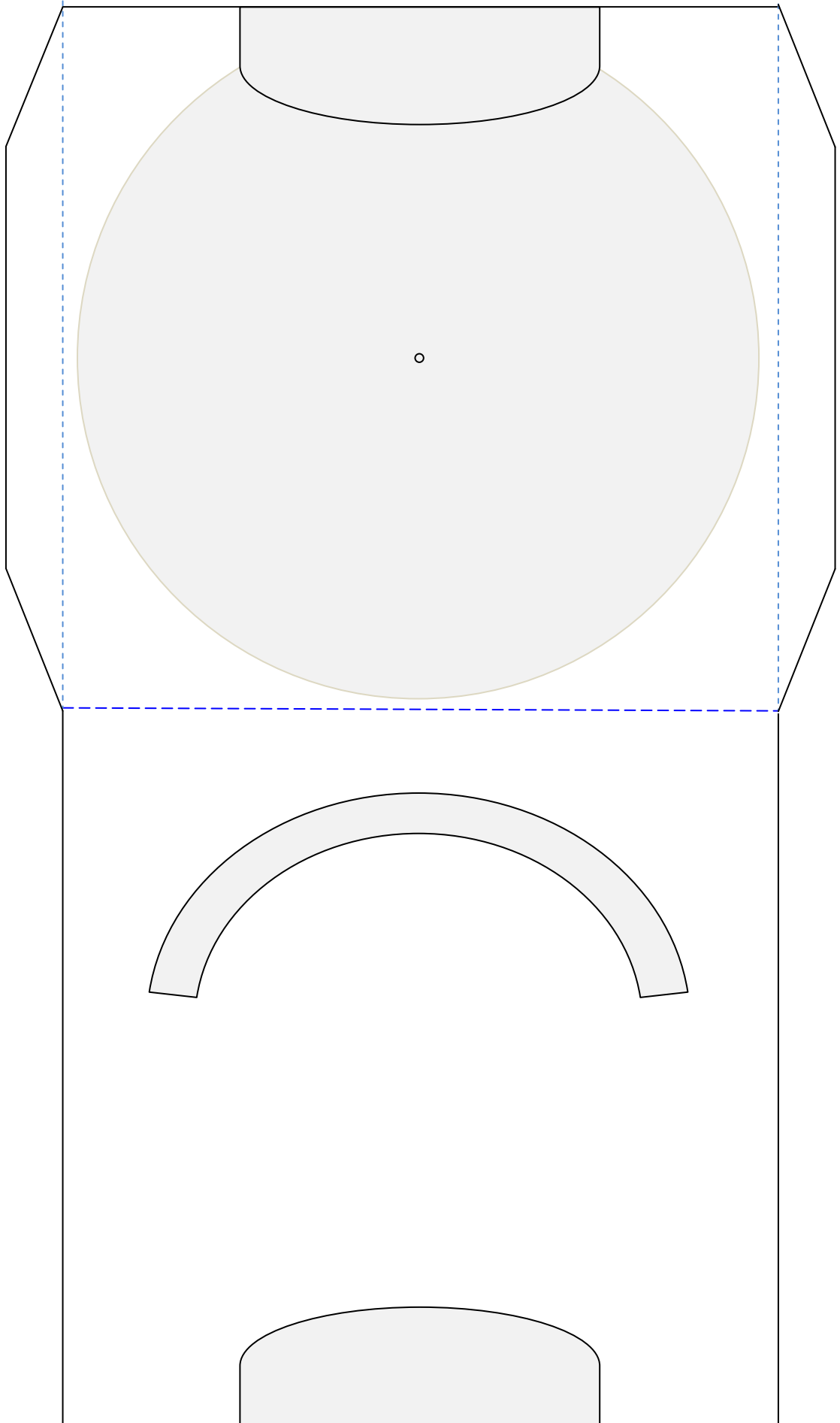
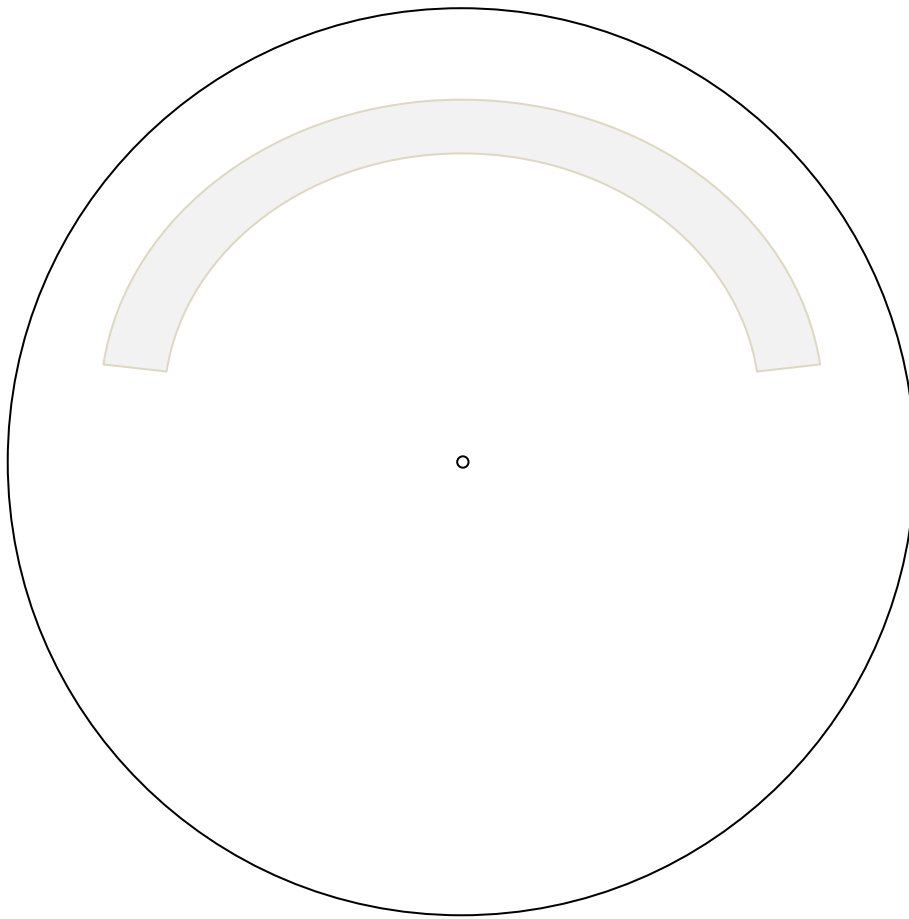


Spinner Reveal Worksheet Template





Note: The shadow disk on the main template is to help you position the spinner, as is the shadow aperture on the spinner itself.

Instructions:

Mount both template pieces on card & score the perforated lines before cutting out.

Cut out both pieces including the three shaded areas on the main template, ensuring you mark the centre points where indicated.

Using a small flat brad, attach the spinner to the template through the centre point.

Fold in the flaps & add glue, fold over the central crease to secure.

Add an embellishment to the spinner through the aperture. (Or add your greeting here)

Once you have mastered this design, you can change the shape of the aperture to anything you want.